

- 1,000 – 3,500 SF Office Available
- 18' Ceiling Heights
- Drive in access
- Fully Sprinkled buildings
- Convenient location on MN HWY 100

Outdoor storage, warehouse, office

4810 Lilac Drive

For information regarding leasing or renovations at 4810 Lilac Drive, please contact:

Joe Klein 612-623-2470

JoeK@hillcrestdevelopment.com

or

Charlie Nestor 612-623-2475

CharlieN@hillcrestdevelopment.com

hillcrestdevelopment.com



4810 Lilac Drive
Brooklyn Center, MN 55429

- 1,000 – 3,500 SF Office Available
- 18' Ceiling Heights
- Drive in access
- Fully Sprinkled buildings
- Convenient location on MN HWY 100

Outdoor storage, warehouse, office

4810 Lilac Drive

For information regarding leasing or renovations at 4810 Lilac Drive, please contact:

Joe Klein 612-623-2470

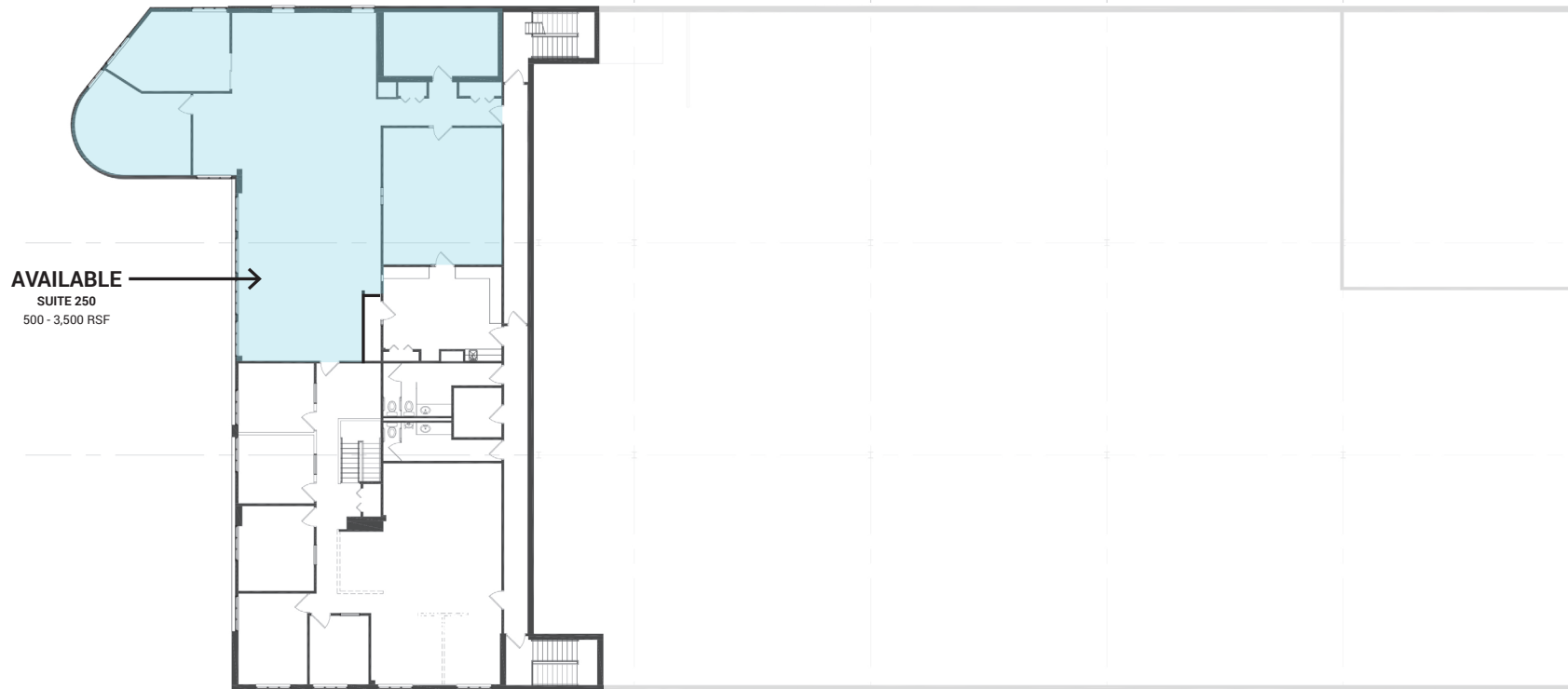
JoeK@hillcrestdevelopment.com

or

Charlie Nestor 612-623-2475

CharlieN@hillcrestdevelopment.com

hillcrestdevelopment.com



AVAILABLE
SUITE 250
500 - 3,500 RSF

Second floor
Plan

4810 Lilac Drive
Brooklyn Center, MN 55429